

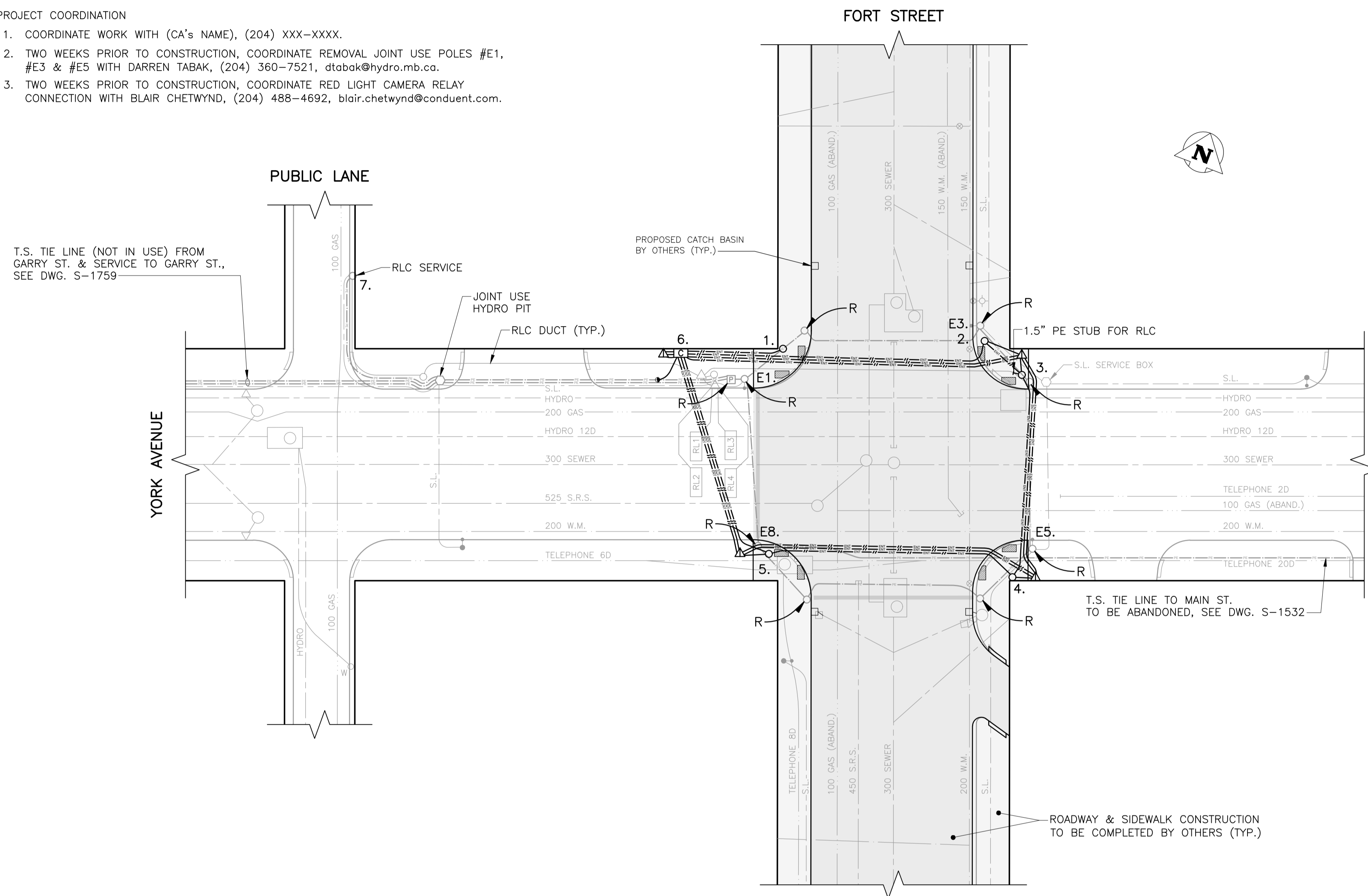
CONSTRUCTION NOTES:

PROJECT SCOPE

1. INSTALL CONDUIT, BASES AND PITS AS SHOWN.
2. INSTALL EQUIPMENT AS SHOWN. REMOVE JOINT USE POLES #E1, #E3 & #E5 AS SHOWN.
3. TIMINGS REQUIRED.

PROJECT COORDINATION

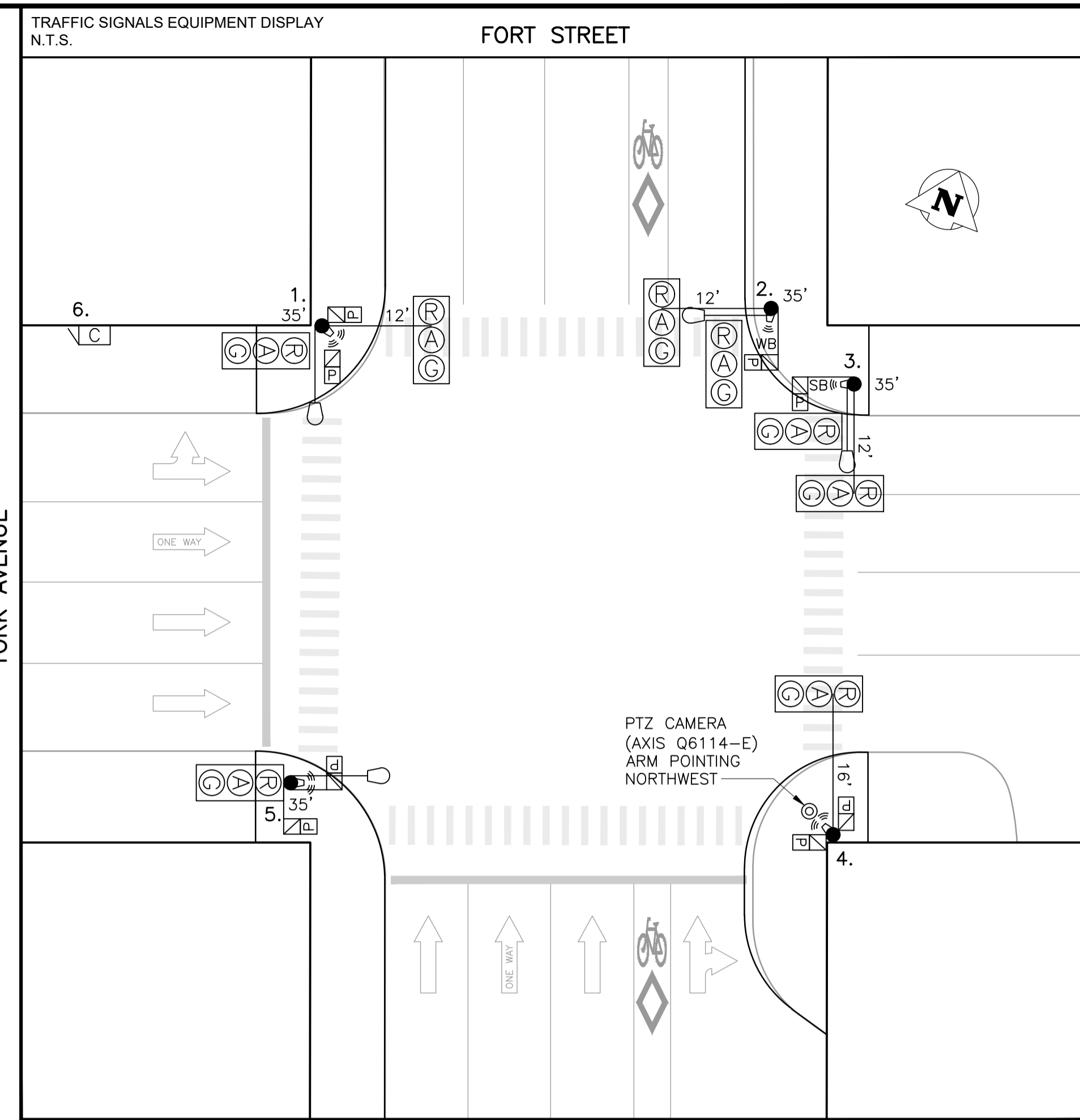
1. COORDINATE WORK WITH (CA'S NAME), (204) XXX-XXXX.
2. TWO WEEKS PRIOR TO CONSTRUCTION, COORDINATE REMOVAL JOINT USE POLES #E1, #E3 & #E5 WITH DARREN TABAK, (204) 360-7521, dtabak@hydro.mb.ca.
3. TWO WEEKS PRIOR TO CONSTRUCTION, COORDINATE RED LIGHT CAMERA RELAY CONNECTION WITH BLAIR CHETWYND, (204) 488-4692, blair.chetwynd@conduent.com.



PLAN VIEW: UNDERGROUND CONSTRUCTION

1:250

INTERNAL REVIEW			
OPERATIONS:	DATE	INITIALS	
TIMINGS (INITIAL):	NEW TIMINGS?	DATE	INITIALS
TIMINGS (PRE-FC):	NEW TIMINGS?	DATE	INITIALS
TMC:	DATE	INITIALS	
STREET LIGHTING:	DATE	INITIALS	
TRAFFIC MANAGEMENT:	DATE	INITIALS	
FACILITIES PLANNING:	DATE	INITIALS	



EQUIPMENT DISPLAY LEGEND			
	EXISTING		PROPOSED (AS SHOWN BELOW)
	PEDESTRIAN HEAD		VEHICLE DETECTION AREA
	PEDESTRIAN HEAD WITH PCS		PUSH BUTTON & DIRECTION
	PEDESTRIAN CORRIDOR BOX		APS SINGLE DIRECTION
	TRAFFIC SIGNAL HEAD		TRAFFIC SIGNAL POLE
	RED FLASHER		AMBER FLASHER (CIRCUIT 'X' OR 'Y')
	LUMINAIRE		CAMERA
	LOW ARM (SHOWN FROM CENTRE)		HIGH ARM (SHOWN FROM SIDE)

NO.	EQUIPMENT LIST	ARM	BASE	B.B.	NO.	EQUIPMENT LIST	ARM	BASE	B.B.
1.	35' SIGNAL FOR XX WATT LUMINAIRE	12'	G	GD	E3.	35' SIGNAL (TO BE REMOVED)			
2.	35' SIGNAL FOR XX WATT LUMINAIRE	12'	OD	DD	E5.	35' SIGNAL (TO BE REMOVED)			
3.	35' SIGNAL FOR XX WATT LUMINAIRE RLC RELAY	12'	OD	DD					
4.	CANTILEVER W/ VERTICAL EXTENSION FOR CAMERA	16'	OD	DC					
5.	35' SIGNAL FOR XX WATT LUMINAIRE		G	GD					
6.	332 CABINET/2070 CONTROLLER								
7.	HYDRO WOOD SERVICE: SERVICE: FOR S-1759								
E1.	35' S.L. (TO BE REMOVED)								

TRAFFIC SIGNALS UNDERGROUND LEGEND				SIGNAL BASE BOLT SQUARE TYPES	
	EXISTING		PROPOSED (AS SHOWN BELOW)	BOLT SQUARE (B.S.) DIA.	
	1 1/2" PE CONDUIT		POLE BASE		TYPE "A" - 8 1/8"
	2" PE CONDUIT		CONTROLLER BASE		TYPE "B" - 6 3/4"
	2" ENT CONDUIT		PEDESTAL BASE		TYPE "C" - 8 1/8" SCREW TYPE
	AERIAL / BURIED CABLE		TERMINAL BASE		TYPE "D" - 12 3/4", 1 1/4" DIA. BOLTS, 24" DIA.
	CONDUIT STUB		SERVICE BOX (PIT)		TYPE "OD" - 12 3/4", 1 1/4" DIA. BOLTS, 28" DIA.
	BREAK-IN		24" PRECAST PIT		TYPE "PD" - 12 3/4", PRECAST, 1 1/4" DIA. BOLTS
	SPICE		30" PRECAST PIT		TYPE "E" - 9 9/16" SCREW TYPE
	SAW-CUT LOOPS		36" PRECAST PIT		TYPE "F" - 9 9/16"
	PREFORMED LOOPS		REMOVAL		TYPE "G" - 8 1/8", 1 1/4" DIA. BOLTS, 89mm PROJ.
			REMOVAL		TYPE "GS" - 8 1/8", 1 1/4" DIA. BOLTS, 76mm PROJ.
			REMOVAL		TYPE "H" - 9 7/8" SCREW TYPE
			REMOVAL		TYPE "I" - 7 3/4"
			REMOVAL		TYPE "J" - 10 5/8", 1 1/4" DIA. BOLTS
			REMOVAL		TYPE "K" - 10 5/8", PRECAST, 1 1/4" DIA. BOLTS
			REMOVAL		TYPE "L" - 6", 5/8" DIA. BOLTS
			REMOVAL		TYPE "PM" - 8 1/8", PRECAST, 5/8" DIA. BOLTS

EXISTING			LEGEND			PROPOSED			EXISTING			LEGEND			PROPOSED			EXISTING			LEGEND			PROPOSED		
	WATERMAIN	150 W.M.		ROADWAY		TELEPHONE		TELEPHONE		TELEPHONE		TELEPHONE		TELEPHONE		TELEPHONE		TELEPHONE		TELEPHONE		TELEPHONE		TELEPHONE		
	HYDRANT		VALVE		SEWER		MANHOLE		CATCH BASIN		CURB INLET		HYDRO		GAS		GAS		GAS		GAS		GAS		GAS	
	PROPERTY LINE		ROADWAY		SIDEWALK		CURB & CURB RAMP		WARNING TILE		SLOPE		CULVERT		BUILDING		TREE		TREE		TREE		TREE		TREE	
	TELEPHONE		TELEPHONE		TELEPHONE		TELEPHONE		TELEPHONE		TELEPHONE		TELEPHONE		TELEPHONE		TELEPHONE		TELEPHONE		TELEPHONE		TELEPHONE		TELEPHONE	

UNDERGROUND STRUCTURES

UNDERGROUND STRUCTURES ID DATE (YYYYMMDD)

WATER & WASTE REVIEW ID

NOTE: LOCATIONS OF UNDERGROUND STRUCTURES AS SHOWN ARE BASED ON THE BEST INFORMATION AVAILABLE. BUT NO GUARANTEE IS GIVEN THAT ALL EXISTING UTILITIES ARE SHOWN OR THAT THE GIVEN LOCATIONS ARE EXACT. CONFIRMATION OF EXISTENCE AND EXACT LOCATION OF ALL SERVICES MUST BE OBTAINED FROM THE INDIVIDUAL UTILITIES BEFORE PROCEEDING WITH CONSTRUCTION.

CONSTRUCTION REVISIONS

NO.	REVISION	DATE (YYYYMMDD)	BY
A	ISSUED FOR INTERNAL REVIEW		

ACCOUNTS:

WT PENDING

ENGINEER'S SEAL:

PRELIMINARY

NOT FOR CONSTRUCTION

THE CITY OF WINNIPEG

PUBLIC WORKS DEPARTMENT

TRANSPORTATION DIVISION

TRAFFIC SIGNALS

FORT ST. & YORK AVE.

UNITS: ALL DIMENSIONS ARE IN METERS UNLESS OTHERWISE NOTED

DRAWING NUMBER: **S-1162**